



# AUSONIA

OUR ENERGY, YOUR POWER



TECHNICAL DATA

## PE1720SWD

### GENSET SPECIFICATIONS

Prime Power (PRP)	1720 kVA	1376 kW
Stand-by (LTP)	1890 kVA	1512 kW
Power factor (cosphi)	0,8	
Voltage	400/230 V	
Frequency	50 Hz	

### ENGINE SPECIFICATIONS

Brand	PERKINS
Type	4012-46 TAG3A
Net engine power prime	1436 kW
Net engine power stand-by	1579 kW
Aspiration	TCA
Cycle	diesel 4 stroke
Cooling	water
Speed	1500 r.p.m.
Cylinders	12 V
Bore x stroke	160 x 190 mm
Displacement	45,842 l
Fuel consumption 75% prime power	266 l/h +/- 5%
Oil consumption	0,25% of fuel consumption
Oil sump capacity	177 l
Coolant system capacity (engine & radiator)	207 l
Standard voltage	24 V
Governor type	electronic

### ALTERNATOR SPECIFICATIONS

Power (PRP)	1720 kVA
Overload	10% for 1 hour
Voltage	400/230 V
Frequency	50 Hz
Speed	1500 r.p.m.
Temperature rise	H
Insulation class	H
Degree of protection	IP 23

### STANDARD EQUIPMENT

Starting motor and alternator battery charger
Dry air filter with removable element
Radiator for engine cooling
Water preheating system
Protection for fan and moving parts
Exhaust gas silencer
Built-in fuel tank 120 l
First filling oil
Skidbase with antivibrating shock-absorbers
Lead type batteries with cables and tray
Lifting devices
4-pole circuit breaker in fixed configuration, manual control

#### Rating according ISO 8528

##### Prime Power (PRP)

It is defined as being the maximum power which a generating set is capable of delivering continuously whilst supplying a variable electrical load when operated for an unlimited number of hours per year under the agreed operating conditions with the maintenance intervals and procedures being carried out as prescribed by the manufacturer. The permissible average power output over 24 h of operation shall not exceed 70% of the prime power. A 10% overload capacity is available for a period of 1 hour within a 12-hour period of operation.

##### Limited-Time Running Power (LTP)

It is defined as the maximum power available, under the agreed operating conditions, for which the generating set is capable of delivering for up to 500 h of operation per year (of which no more than 300 for continuative use) with the maintenance intervals and procedures being carried out as prescribed by the manufacturers. No overload capability is available.



# AUSONIA

OUR ENERGY, YOUR POWER



TECHNICAL DATA

## PE1720SWD

### CONTROL PANEL

Genset control with automatic management of load transfer DG/Mains  
Controller with thresholds, counters, alarm, status  
LCD display with pushbutton access for monitoring electrical and mechanical parameters  
Advanced programmable I/O functions  
Multilanguages text for measurements setting and messages  
Remote communication interface  
List of events  
Static battery charger

### SOUNDPROOFED CONTAINER

Highly corrosionproof  
Galvanized steel rain proof louvers with fixed wings  
Antianimal protection grid (air intake)  
Exhaust silencer with rain flap  
Insulation with material in fire reaction class A1  
Doors with yale type key  
Emergency stop  
Easy connections for cables installation

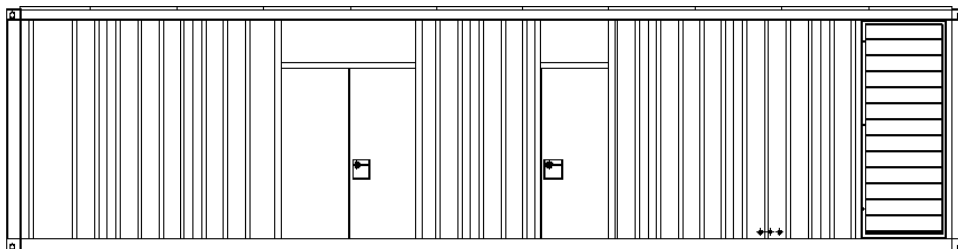
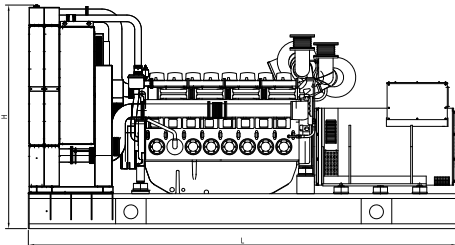
### AVAILABLE OPTIONS

Different soundproofing levels for containerized gensets  
Solutions for arctic or hot environment  
A wide selection of genset controllers and synch panels  
Additional alarms (warning / shutdown)  
Extended fuel tank capacity  
Automatic refuelling kit  
Automatic transfer switch panel (ATS)  
Residential Silencer (for open set only)  
Leak proof tray  
Special tools

### DIMENSIONS AND WEIGHTS

Open set on skid base	LxWxH: mm 4870x1800x2300	Dry: kg 11000
Soundproofed container Silent version (*)	LxWxH: mm 10500x2435x2990	Dry: kg 17600

(\*) Dimensions refer to the genset only, excluding exhaust muffler and/or remote radiator, whichever is applicable



For further information on our standard and optional features, please contact our sales office at: [sales@ausonia.net](mailto:sales@ausonia.net)