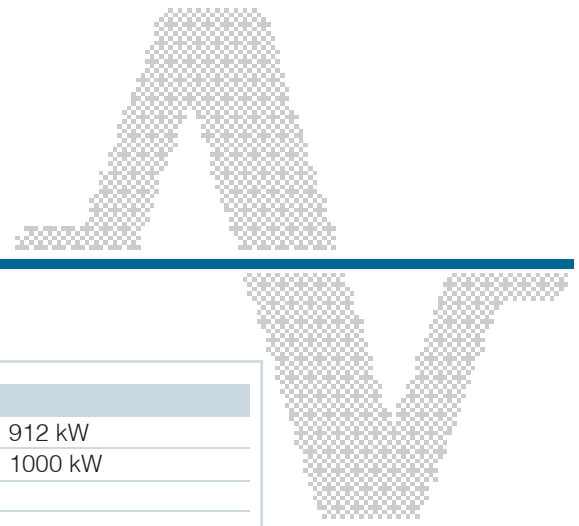




AUSONIA

OUR ENERGY. YOUR POWER



TECHNICAL DATA

MT1140SWD

GENSET SPECIFICATIONS

| | | |
|-----------------------|-----------|---------|
| Prime Power (PRP) | 1140 kVA | 912 kW |
| Stand-by (LTP) | 1250 kVA | 1000 kW |
| Power factor (cosphi) | 0,8 | |
| Voltage | 400/230 V | |
| Frequency | 50 Hz | |

ENGINE SPECIFICATIONS

| | |
|---|---------------------------|
| Brand | MTU |
| Type | 16V 2000 G36F |
| Net engine power prime | 960 kW |
| Net engine power stand-by | 1060 kW |
| Aspiration | TCA |
| Cycle | diesel 4 stroke |
| Cooling | water |
| Speed | 1500 r.p.m. |
| Cylinders | 16 V |
| Bore x stroke | 135 x 156 mm |
| Displacement | 35,700 l |
| Fuel consumption 75% prime power | 165 l/h +/- 5% |
| Oil consumption | 0,35% of fuel consumption |
| Oil sump capacity | 114 l |
| Coolant system capacity (engine & radiator) | 70 l |
| Standard voltage | 24 V |
| Governor type | electronic |

ALTERNATOR SPECIFICATIONS

| | |
|----------------------|----------------|
| Power (PRP) | 1140 kVA |
| Overload | 10% for 1 hour |
| Voltage | 400/230 V |
| Frequency | 50 Hz |
| Speed | 1500 r.p.m. |
| Temperature rise | H |
| Insulation class | H |
| Degree of protection | IP 23 |

STANDARD EQUIPMENT

| |
|---|
| Starting motor and alternator battery charger |
| Dry air filter with removable element |
| Radiator for engine cooling |
| Water preheating system |
| Protection for fan and moving parts |
| Exhaust gas silencer |
| Built-in fuel tank 120 l |
| First filling oil |
| Skidbase with antivibrating shock-absorbers |
| Lead type batteries with cables and tray |
| Lifting devices |
| 4-pole circuit breaker in fixed configuration, manual control |

Rating according ISO 8528

Prime Power (PRP)

It is defined as being the maximum power which a generating set is capable of delivering continuously whilst supplying a variable electrical load when operated for an unlimited number of hours per year under the agreed operating conditions with the maintenance intervals and procedures being carried out as prescribed by the manufacturer. The permissible average power output over 24 h of operation shall not exceed 70% of the prime power. A 10% overload capacity is available for a period of 1 hour within a 12-hour period of operation.

Limited-Time Running Power (LTP)

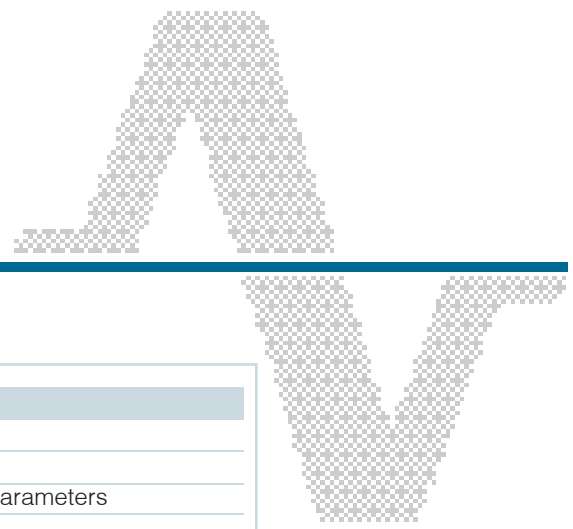
It is defined as the maximum power available, under the agreed operating conditions, for which the generating set is capable of delivering for up to 500 h of operation per year (of which no more than 300 for continuative use) with the maintenance intervals and procedures being carried out as prescribed by the manufacturers. No overload capability is available.





AUSONIA

OUR ENERGY. YOUR POWER



TECHNICAL DATA

MT1140SWD

CONTROL PANEL

- Genset control with automatic management of load transfer DG/Mains
- Controller with thresholds, counters, alarm, status
- LCD display with pushbutton access for monitoring electrical and mechanical parameters
- Advanced programmable I/O functions
- Multilanguages text for measurements setting and messages
- Remote communication interface
- List of events
- Static battery charger

SOUNDPROOFED CONTAINER

- Highly corrosionproof
- Galvanized steel rain proof louvers with fixed wings
- Antianimal protection grid (air intake)
- Exhaust silencer with rain flap
- Insulation with material in fire reaction class A1
- Doors with yale type key
- Emergency stop
- Easy connections for cables installation

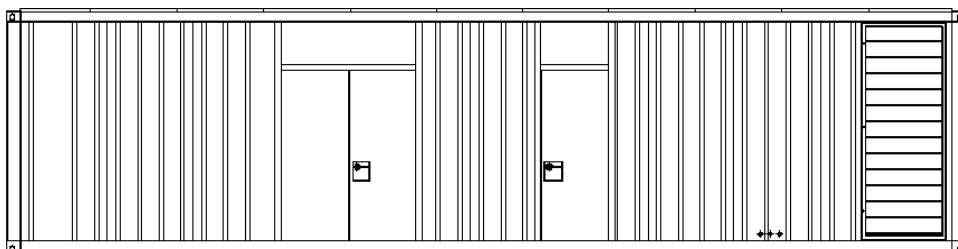
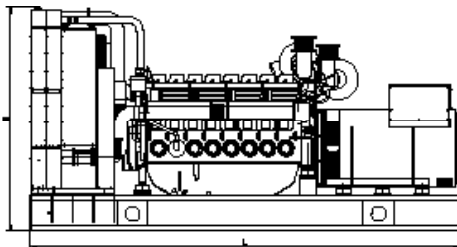
AVAILABLE OPTIONS

- Different soundproofing levels for containerized gensets
- Solutions for arctic or hot environment
- A wide selection of genset controllers and synch panels
- Additional alarms (warning / shutdown)
- Extended fuel tank capacity
- Automatic refuelling kit
- Automatic transfer switch panel (ATS)
- Residential Silencer (for open set only)
- Leak proof tray
- Special tools

DIMENSIONS AND WEIGHTS

| | | |
|---|--------------------------|---------------|
| Open set on skid base | LxWxH: mm 4500x1580x2350 | Dry: kg 7700 |
| Soundproofed container Silent version (*) | LxWxH: mm 9125x2435x2990 | Dry: kg 13900 |

(*) Dimensions refer to the genset only, excluding exhaust muffler and/or remote radiator, whichever is applicable



For further information on our standard and optional features, please contact our sales office at: sales@ausonia.net

